



Refrigerated Merchandisers

Models RE-CN-0380B, 0450B, 1000B, 1200B, 1500B

Items 48381, 48382, 48383, 48384, 48385

Instruction Manual



Revised - 10/28/2025



Toll Free: 1-800-465-0234
Fax: 905-607-0234
Email: service@omcan.com
www.omcan.com



Table of Contents

Model RE-CN-0380B / Model RE-CN-0450B / Model RE-CN-1000B
Model RE-CN-1200B / Model RE-CN-1500B

Section	Page
Disclaimer -----	3
General Information -----	4 - 5
Safety and Warranty -----	5 - 7
Technical Specifications -----	7
Installation -----	8
Operation -----	8
Maintenance -----	9
Troubleshooting -----	9 - 10
Parts Breakdown -----	11 - 20
Electrical Schematics -----	21
Notes -----	22
Warranty Registration -----	23

OMCAN IS NOT RESPONSIBLE FOR ANY DAMAGES DUE TO WATER LEAKS. WARRANTY FOR WATER LEAKS IS VOID IF THE AMBIENT ROOM TEMPERATURE EXCEEDS 75°F AND 55% RELATIVE HUMIDITY, AND THE APPLIANCE DRAIN IS NOT CONNECTED DIRECTLY TO A FLOOR DRAIN.

OMCAN N'EST PAS RESPONSABLE DES DOMMAGES DUS AUX FUITES D'EAU. LA GARANTIE POUR LES FUITES D'EAU EST ANNULÉE SI LA TEMPÉRATURE AMBIANTE DE LA PIÈCE DÉPASSE 75°F ET 55% D'HUMIDITÉ RELATIVE, ET SI LE DRAIN DE L'APPAREIL N'EST PAS RACCORDÉ DIRECTEMENT À UN DRAIN DE PLANCHER.

OMCAN NO SE HACE RESPONSABLE DE LOS DAÑOS CAUSADOS POR FUGAS DE AGUA. LA GARANTÍA POR FUGAS DE AGUA QUEDA ANULADA SI LA TEMPERATURA AMBIENTE SUPERA LOS 75°F Y EL 55% DE HUMEDAD RELATIVA, Y EL DESAGÜE DEL APARATO NO ESTÁ CONECTADO DIRECTAMENTE A UN DESAGÜE DE PISO.

General Information

Omcan Manufacturing and Distributing Company Inc., Food Machinery of America, Inc. dba Omcan and Omcan Inc. are not responsible for any harm or injury caused due to any person's improper or negligent use of this equipment. The product shall only be operated by someone over the age of 18, of sound mind, and not under the influence of any drugs or alcohol, who has been trained in the correct operation of this machine, and is wearing authorized, proper safety clothing. Any modification to the machine voids any warranty, and may cause harm to individuals using the machine or in the vicinity of the machine while in operation.

CHECK PACKAGE UPON ARRIVAL

Upon receipt of an Omcan shipment please inspect for external damage. If no damage is evident on the external packaging, open carton to ensure all ordered items are within the box, and there is no concealed damage to the machine. If the package has suffered rough handling, bumps or damage (visible or concealed), please note it on the bill of lading before accepting the delivery and contact Omcan within 24 hours, so we may initiate a claim with the carrier. A detailed report on the extent of the damage caused to the machine must be filled out within three days, from the delivery date shown in the shipping documents. Omcan has no recourse for damaged products that were shipped collect or third party.

Before operating any equipment, always read and familiarize yourself with all operation and safety instructions.

Omcan would like to thank you for purchasing this machine. It's of the utmost importance to save these instructions for future reference. Also save the original box and packaging for shipping the equipment if servicing or returning of the machine is required.

Omcan Fabrication et distribution Compagnie Limitée et Food Machinery d'Amérique, dba Omcan et Omcan Inc. ne sont pas responsables de tout dommage ou blessure causé du fait que toute personne ait utilisé cet équipement de façon irrégulière. Le produit ne doit être exploité que par quelqu'un de plus de 18 ans, saine d'esprit, et pas sous l'influence d'une drogue ou d'alcool, qui a été formé pour utiliser cette machine correctement, et est vêtu de vêtements de sécurité appropriés. Toute modification de la machine annule toute garantie, et peut causer un préjudice à des personnes utilisant la machine ou des personnes à proximité de la machine pendant son fonctionnement.

VÉRIFIEZ LE COLIS DÈS RÉCEPTION

Dès réception d'une expédition d'Omcan veuillez inspecter pour dommages externes. Si aucun dommage n'est visible sur l'emballage externe, ouvrez le carton afin de s'assurer que tous les éléments commandés sont dans la boîte, et il n'y a aucun dommage dissimulé à la machine. Si le colis n'a subi aucune mauvaises manipulations, de bosses ou de dommages (visible ou cachée), notez-le sur le bond de livraison avant d'accepter la livraison et contactez Omcan dans les 24 heures qui suivent, pour que nous puissions engager une réclamation auprès du transporteur. Un rapport détaillé sur l'étendue des dommages causés à la machine doit être rempli dans un délai de trois jours, à compter de la date de livraison indiquée dans les documents d'expédition. Omcan n'a aucun droit de recours pour les produits endommagés qui ont été expédiés ou cueillis par un tiers transporteur.

Avant d'utiliser n'importe quel équipement, toujours lire et vous familiariser avec toutes les opérations et les

General Information

consignes de sécurité.

Omcan voudrais vous remercier d'avoir choisi cette machine. Il est primordial de conserver ces instructions pour une référence ultérieure. Également conservez la boîte originale et l'emballage pour l'expédition de l'équipement si l'entretien ou le retour de la machine est nécessaire.

Omcan Empresa De Fabricacion Y Distribucion Inc. Y Maquinaria De Alimentos De America, Inc. dba Omcan y Omcan Inc. no son responsables de ningun daño o perjuicio causado por cualquier persona inadecuada o el uso descuidado de este equipo. El producto solo podra ser operado por una persona mayor de 18 años, en su sano juicio y no bajo alguna influencia de droga o alcohol, y que este ha sido entrenado en el correcto funcionamiento de esta máquina, y ésta usando ropa apropiada y autorizada. Cualquier modificación a la máquina anula la garantía y puede causar daños a las personas usando la máquina mientras esta en el funcionamiento.

REVISE EL PAQUETE A SU LLEGADA

Tras la recepcion de un envio Omcan favor inspeccionar daños externos. Si no hay daños evidentes en el empaque exterior, Habra el carton para asegurarse que todos los articulos solicitados estén dentro de la caja y no encuentre daños ocultos en la máquina. Si el paquete ha sufrido un manejo de poco cuidado, golpes o daños (visible o oculto) por favor anote en la factura antes de aceptar la entrega y contacte Omcan dentro de las 24 horas, de modo que podamos iniciar una reclamación con la compañía. Un informe detallado sobre los daños causados a la máquina debe ser llenado en el plazo de tres días, desde la fecha de entrega que se muestra en los documentos de envío. Omcan no tiene ningun recurso por productos dañados que se enviaron a recoger por terceros.

Antes de utilizar cualquier equipo, siempre lea y familiarizarse con todas las instrucciones de funcionamiento y seguridad.

Omcan le gustaría darle las gracias por la compra de esta máquina. Es de la mayor importancia para salvar estas instrucciones para futuras consultas. Además, guarda la caja original y el embalaje para el envío del equipo si servicio técnico o devolución de la máquina que se requiere.

Safety and Warranty

- This appliance is not intended for use by persons (including children) with reduced physical, sensory or mental capabilities, or lack of experience and knowledge, unless they have been given supervision concerning use of the appliance by a person responsible for their safety.
- If the supply cord is damaged, it must be replaced by the manufacture, its service agent or similarly qualified persons in order to avoid a hazard.
- The rated voltage is 115V~. The rated frequency is 60Hz. If the working voltage is too low or too high, the compressor will be damaged.
- Using three hole socket (Grounding). To ensure safety, socket and cord must be bearing above 10A electricity. Always make sure all sockets already connected are grounded. And do not charge any power cords and plugs. Ensure the plug and socket are firmly attached, otherwise, it may lead to a fire. After

Safety and Warranty

placing the machine in a good position, ensure the plug is not catching on anything to prevent the user from accidentally pulling the unit away.

- Do not damage power cord. When you take plug, you must grasp the plug. Do not pull the cord. Do not press power cord. Be carefully when carrying the product.
- Using & Carrying. In order to avoid hazard by glass. Do not press and pull the glass door, because it is easily broken. Whenever removing or transporting, avoid pressing the packing front side.
- When not using the showcase. Ensure the machine is far away from fire in order to avoid any hazards. Please remove the door to prevent children from playing and accidentally closing the door on themselves. Please send the machine to an authorized service company to repair it.
- Gas or other fire sources. Turn off the gas valve first, then open the door and window. Do not remove the plug from the socket.
- The fridge cabinet is only for refrigeration. Do not put frozen food and meat, in order to avoid it from thawing.
- Avoid fire, do not put any gasoline or other flammable liquids near the showcase.
- Do not put any dangerous materials in the show case. Such as flammable liquids, explosives, acids, alkalies, ect.
- To avoid children from being hurt, prevent children from entering the body, also prevent them from putting hands or feet into the compressor room, or the back gap of showcase.
- Do not modify the showcase. It is prohibited to modify the unit. Maintaining must be done by qualified personnel.
- Do not clean the showcase by water. Also do not put the showcase in a moist location to avoid electronic insulation and fire.
- Please remove the plug when the following happens: before cleaning, service, or power failure. The unit must remain unplugged for 5 minutes before plugging back in. This is to prevent damage to the compressor.
- Assemble the shelf in the correct way. The shelf may fall if improperly installed. This product is only use for storing food. It can not be for other uses such as storing living flowers, medicine, drugs, chemicals, blood, ect.

WARNING: keep ventilation openings in the appliance enclosure or in the built-in structure clear of obstruction.

WARNING: do not use mechanical devices or other means to accelerate the defrosting process, other than those recommended by the manufacture.

WARNING: do not damage the refrigerant circuit.

WARNING: do not use electrical appliances inside the food storage compartments of the appliance, unless they are of type recommended by the manufacturer.

RESIDENTIAL USERS: vendor assumes no liability for parts or labor coverage for component failure or other damages resulting from installation in non-commercial or residential applications. The right is reserved to deny shipment for residential usage; if this occurs, you will be notified as soon as possible.

2 YEARS PARTS AND LABOUR / 5 YEARS PARTS ONLY ON COMPRESSOR WARRANTY

Within the warranty period, contact Omcan Inc. at 1-800-465-0234 to schedule an Omcan authorized service technician to repair the equipment locally.

Unauthorized maintenance will void the warranty. Warranty covers electrical and part failures, not improper use.



Safety and Warranty

Please see <https://omcan.com/disclaimer> for complete info.

WARNING:

The packaging components are classified as normal solid urban waste and can therefore be disposed of without difficulty.

In any case, for suitable recycling, we suggest disposing of the products separately (differentiated waste) according to the current norms.

DO NOT DISCARD ANY PACKAGING MATERIALS IN THE ENVIRONMENT!

Technical Specifications

Model	RE-CN-0380B	RE-CN-0450B	RE-CN-1000B	RE-CN-1200B	RE-CN-1500B
Item Number	48381	48382	48383	48384	48385
Power	220 W	350 W	380 W	620 W	780 W
Capacity	380 L / 13.41 cu.ft.	450 L / 15.89 cu.ft.	1000 L / 35.31 cu.ft.	1200 L / 42.37 cu.ft.	1500 L / 52.97 cu.ft.
Exterior Material	Glass / Steel Plate / Plastic				
Interior Material	Glass / Steel Plate / Aluminum				
Shelf Material	Wire-Steel				
Shelf Dimensions	13.9" x 19.3" 354 x 491mm	13.9" x 21.4" 354 x 543mm	21.4" x 14.8" 544 x 375mm	36.9" x 14.8" 937 x 375mm	45.1" x 14.8" 1145 x 375mm
				17.4" x 14.8" 442 x 375mm	21.4" x 14.8" 544 x 375mm
Electrical	110-120V / 60Hz / 1				
Lamp Power	25 W	35 W	45 W	55 W	
Temperature Range	0 - 10°C / 32 - 50°F				
Max Ambient Temp Rating	24°C / 75°F				
Noise DB Level	≤55 db				
Refrigerant and Injection	R600a/80g	R600a/83g	R290/105g	R290/125g	R290/135g
Type of Climate	3				
Rated Current	2.8A	3.2A	4.5A	8.9A	
Foaming Agent	C5H10				
Internal Dimensions	20.4" x 18.1" x 66.9" 519 x 460 x 1700mm	22.6" x 18.1" x 66.9" 574 x 460 x 1700mm	44.2" x 18.9" x 68.1" 1123 x 480 x 1730mm	56" x 18.9" x 68.1" 1423 x 480 x 1730mm	67.8" x 18.9" x 68.1" 1723 x 480 x 1730mm
Net Dimensions	23.4" x 22.8" x 76.4" 595 x 580 x 1940mm	25.6" x 22.8" x 76.4" 650 x 580 x 1940mm	47.2" x 23" x 78" 1200 x 585 x 1980mm	59.1" x 23" x 78" 1500 x 585 x 1980mm	70.9" x 23" x 78" 1800 x 585 x 1980mm
Net Weight	167.6 lbs. / 76 kgs.	169.8 lbs. / 77 kgs.	297.6 lbs. / 135 kgs.	396.8 lbs. / 180 kgs.	434.3 lbs. / 197 kgs.
Packaging Dimensions	25.6" x 24.1" x 79.5" 650 x 613 x 2020mm	27.8" x 24.1" x 79.5" 705 x 613 x 2020mm	49.4" x 24.8" x 79.1" 1255 x 630 x 2010mm	61.2" x 24.8" x 79.1" 1555 x 630 x 2010mm	73" x 24.8" x 79.1" 1855 x 630 x 2010mm
Packaging Weight	177.5 lbs. / 80.5 kgs.	180.8 lbs. / 82 kgs.	315.3 lbs. / 143 kgs.	435.4 lbs. / 197.5 kgs.	496 lbs. / 225 kgs.

Installation

TRANSPORTATION AND POSITION

- When opening the packing be sure to check for all pieces of the unit and for any potential damage.
- Do not shake the unit while transporting. Do not tilt the unit beyond 45 degrees to avoid damaging the cooling system.
- The unit must be placed on a stable and level location.
- Remove the plug's plastic jacket before connecting to a power outlet. Ensure that the machine has been running for awhile before putting in any food.
- Do not place the unit in a moist location or an enclosed place with no ventilation. Always clean with a soft cloth.
- Do not place in a cold environment or outdoors.
- Do not place near a heat source or in direct sunlight.

Operation

BEFORE FIRST USE

- Remove the white rubber blocks under the doors. These are used to prevent the door from sagging during transportation.
- Keep the machine in a good position and open the door to ventilate.
- Although machine already cleaned by the factory, please clean it before using.
- The machine must be empty when starting for the first time, then turn on the thermostat to start running. The machine will feel hot due to the compressor running, this is normal and will stop once the compressor stops running. It is recommended to add food only after the inner side temperature is substantially cooled.

THERMOSTAT



1. Temperature Set. Press the SET button for 3 seconds until the set indicator is bright and the number on LED display flashes. This number is the current temperature. Press the SET button to adjust the number. The adjustable temperature range is 32°F - 50°F. The temperature will be fixed after you stop pressing any buttons for 10s.
2. Compressor start delay time. When it's powered on for the first time or after a short cut-off, the compressor will delay for about 8 minutes before working again. This is a normal phenomenon in order to avoid compressor damage caused by frequent power off and power on.
3. Illuminate. Press the LAMP button, lamp is on. Press the LAMP button again, lamp is off.

CLEANING

- Before cleaning, remove the plug from the outlet.
- Using a soft cloth or sponge, use clean water or liquid soap.
- Do not use organic, alkaline, hot water, acid to clean the showcase.
- Do not use water to clean the compressor room. After cleaning, use a cloth to dry water to avoid any rust.
- Hot food must be cooled for some time to put in to the fridge. It will overwork the machine if you put hot food into the fridge.
- Allow adequate space between the food. Do not overfill the unit, otherwise the unit will not cool efficiently. It may even damage the unit.
- When the machine is working. Do not open the door often and reduce opening the door. This is to save energy and to keep the interior cool.
- Power outage. You should wait around 5 mins to turn on or connect to electricity. Otherwise it will effect the machine life and even cause damage.
- Please turn off and remove from electricity if the machine is not being used for a long time and clean it as stated above. Store while not in use.

DEFROST WATER

Normally, when the compressor stops, the unit temperature will rise. Evaporator frost will thaw and flow to the water box in compressor room by drain hose. The water that is in the water box will vaporise by the heat of the compressor. There is no need to perform a manual defrost.

REPLACING THE LAMP

If the lamp is damaged, please contact the authorized service company. Do not perform maintenance by yourself.

Troubleshooting

NO COOLING

- Check if there is a power outage.
- Check if the connection between the plug and the socket is good.
- Check if the fuse is switched off.
- Check if the current protector is workable (if the appliance is fixed with a current protector).

BAD COOLING EFFECTS

- Check if the thermostat is on a suitable position.
- Check if the appliance is exposed to sunlight or near heat sources.
- Check if there is dust on the compressor and condenser.
- Check if there are too many stored goods.
- Check if there is not enough space between the goods.
- Check if the goods are hot.
- Check if the door is opened too frequently.
- Check if the door is fullt closed.
- Check if the frost on inner cabinet is too thick.

Troubleshooting

THE APPLIANCE DOES NOT STOP WORKING

- Check if the thermostat is set too high.
- Check if there is too many goods.
- Check if the ambient temperature is too high.

VERY NOISY

- Check if the ground is flat and stable.
- Check if the appliance is close to walls.
- Check if the appliance contacts something which is easily moved or shaken.

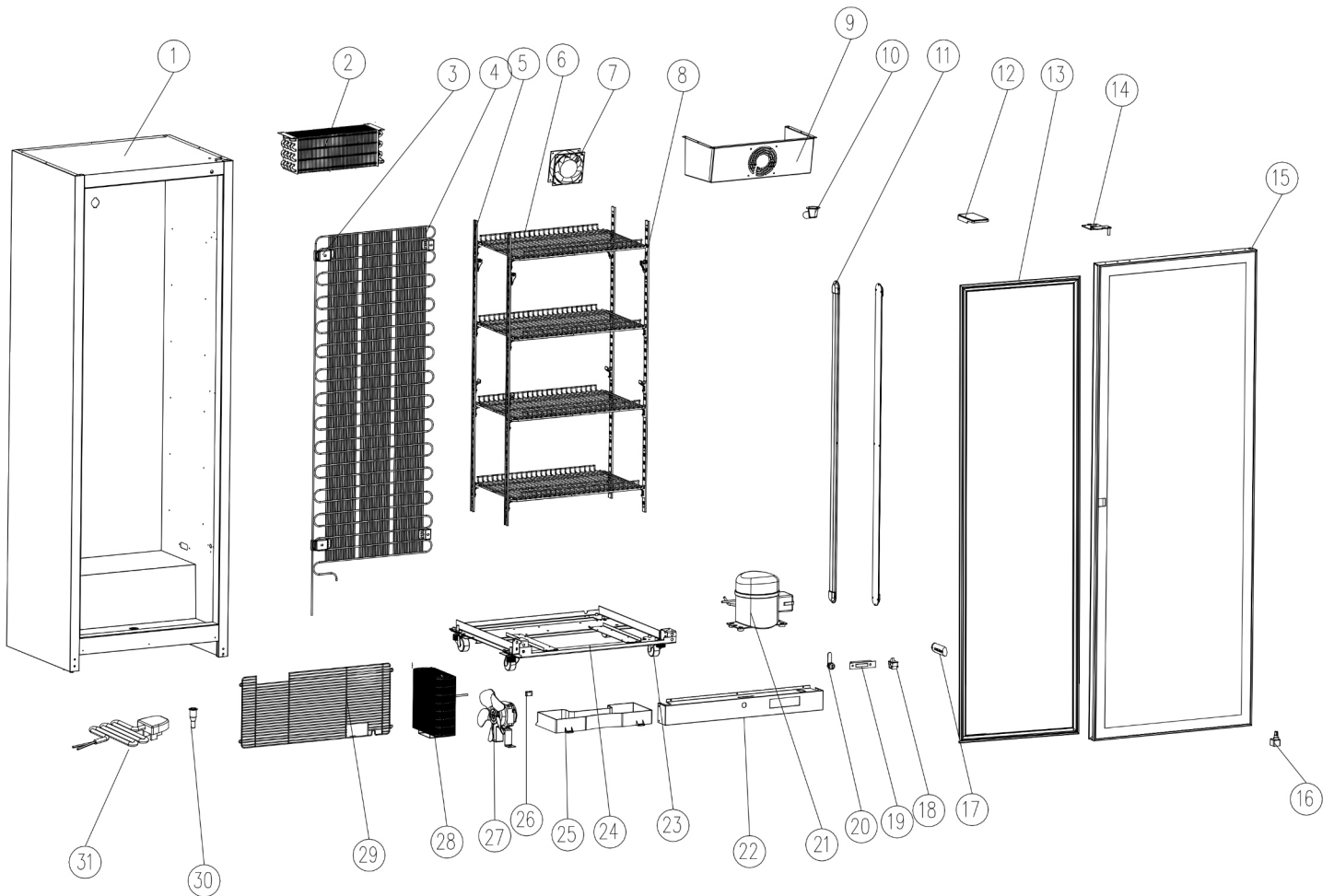
ATTENTION

If a problem can not be handled according to the instruction manual, please contact the authorized service company and do not try to repair the appliance by yourself.

NOTE: THESE UNITS ARE EQUIPPED WITH A TEMPERATURE CONTROLLER THAT USES FAHRENHEIT AS STANDARD. AN OPTIONAL TEMPERATURE CONTROLLER WITH CELSIUS IS AVAILABLE.

Parts Breakdown

Model RE-CN-0380B 48381



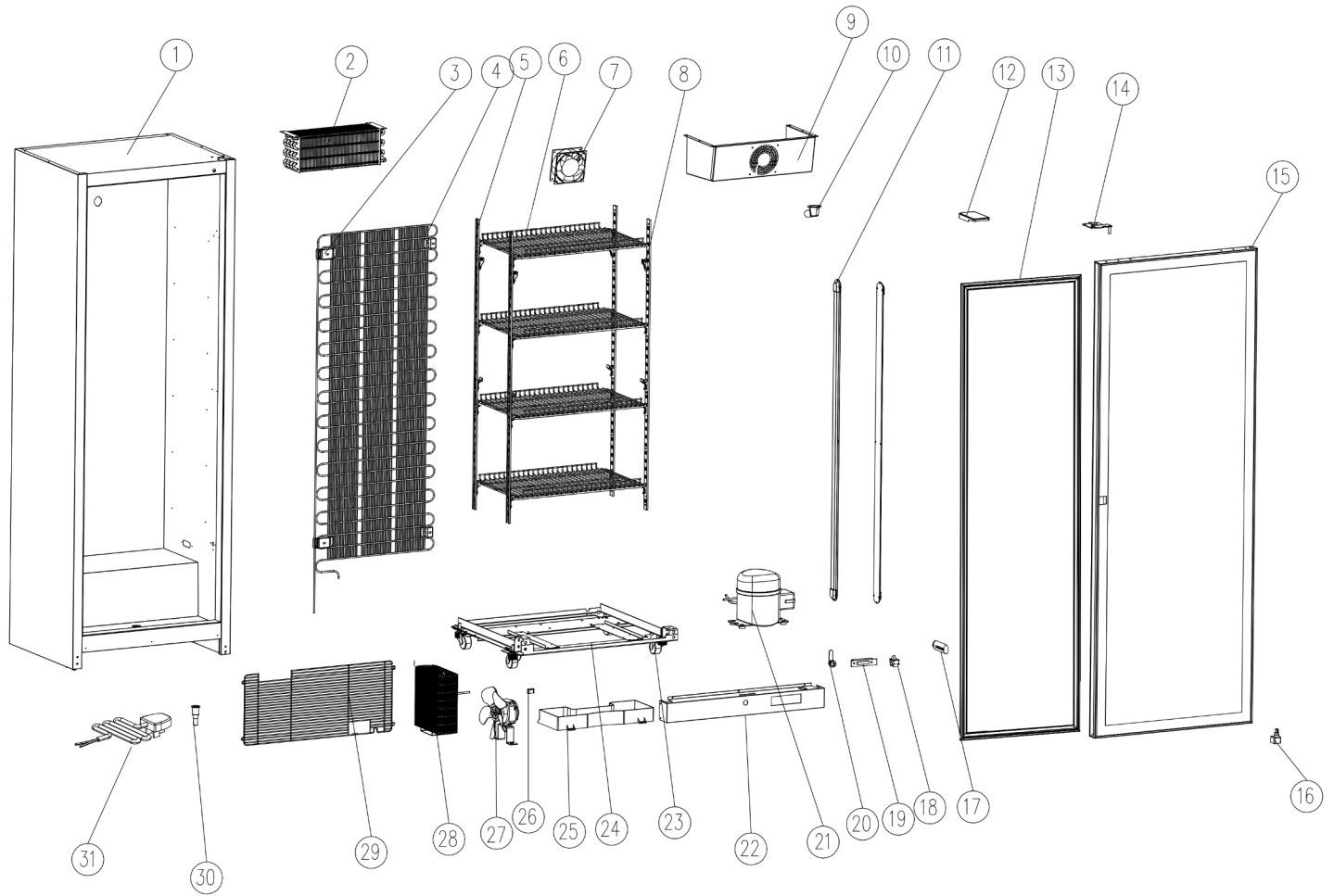
Parts Breakdown

Model RE-CN-0380B 48381

Item No.	Description	Position	Item No.	Description	Position	Item No.	Description	Position
AU675	CABINET FOR 48381	1	AU686	TOP HINGE COVER FOR 48381	12	AU696	CASTER FOR 48381	23
AU676	FIN EVAPORATOR FOR 48381	2	AU687	FAN PLATE FOR 48381	13	AU697	BOTTOM FRAME FOR 48381	24
AU677	CONDENSER FIXINGS FOR 48381	3	AU688	TOP HINGE FOR 48381	14	AU698	WATER CONNECTION BOX FOR 48381	25
AU678	EXTERNAL CONDENSER FOR 48381	4	AU689	DOOR FOR 48381	15	AU699	LINE CLAMP FOR 48381	26
AU679	RACK HANGERS FOR 48381	5	AU690	LOWER HINGE FOR 48381	16	AU700	CONDENSER FAN FOR 48381	27
AU680	WIRE RACK FOR 48381	6	AU691	THERMAL HEAD COVER FOR 48381	17	AU701	CONDENSER FOR 48381	28
AU681	EVAPORATOR FAN FOR 48381	7	AU692	FAN SWITCH FOR 48381	18	AU702	COMPRESSOR COVER BEHIND FOR 48381	29
AU682	SHELF CLAMP FOR 48381	8	AV812	ELECTRONIC THERMOSTAT FOR 48381	19	AU703	DRAIN PIPE FOR 48381	30
AU683	EVAPORATOR COVER FOR 48381	9	AU693	LOCK FOR 48381	20	AU704	POWER CORD PLUG FOR 48381	31
AU684	WATER HOPPER FOR 48381	10	AU694	COMPRESSOR FOR 48381	21	AV813	PRICE TAG FOR 48381	32
AU685	LED FOR 48381	11	AU695	COMPRESSOR COVER FRONT FOR 48381	22			

Parts Breakdown

Model RE-CN-0450B 48382



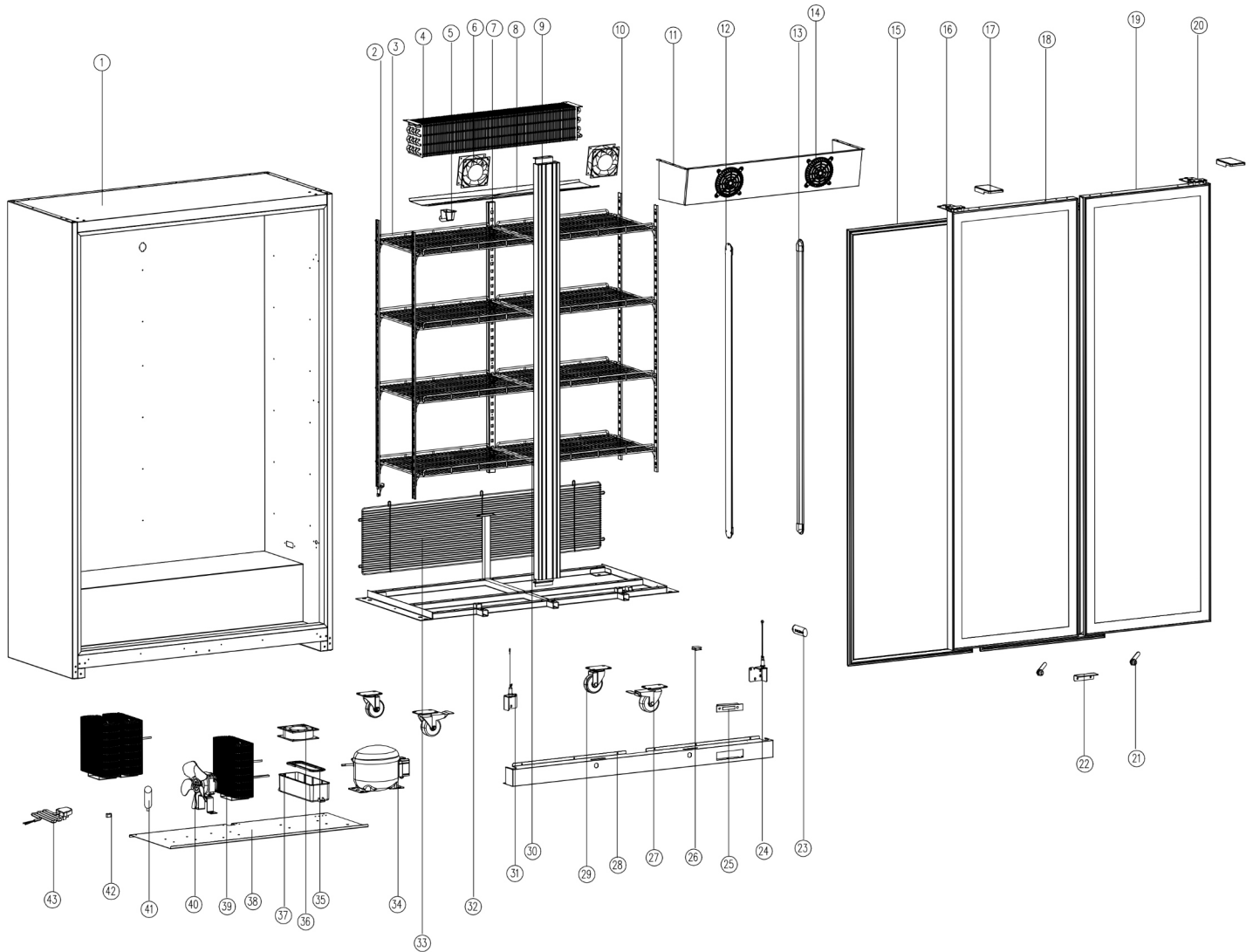
Parts Breakdown

Model RE-CN-0450B 48382

Item No.	Description	Position	Item No.	Description	Position	Item No.	Description	Position
AU705	CABINET FOR 48382	1	AU686	TOP HINGE COVER FOR 48382	12	AU696	CASTER FOR 48382	23
AU676	FIN EVAPORATOR FOR 48382	2	AU707	FAN PLATE FOR 48382	13	AU711	BOTTOM FRAME FOR 48382	24
AU677	CONDENSER FIXINGS FOR 48382	3	AU688	TOP HINGE FOR 48382	14	AU698	WATER CONNECTION BOX FOR 48382	25
AU678	EXTERNAL CONDENSER FOR 48382	4	AU708	DOOR FOR 48382	15	AU699	LINE CLAMP FOR 48382	26
AU679	RACK HANGERS FOR 48382	5	AU690	LOWER HINGE FOR 48382	16	AU700	CONDENSER FAN FOR 48382	27
AU706	WIRE RACK FOR 48382	6	AU691	THERMAL HEAD COVER FOR 48382	17	AU701	CONDENSER FOR 48382	28
AU681	EVAPORATOR FAN FOR 48382	7	AU692	FAN SWITCH FOR 48382	18	AU712	COMPRESSOR COVER BEHIND FOR 48382	29
AU682	SHELF CLAMP FOR 48382	8	AV812	ELECTRONIC THERMOSTAT FOR 48382	19	AU703	DRAIN PIPE FOR 48382	30
AU683	EVAPORATOR COVER FOR 48382	9	AU693	LOCK FOR 48382	20	AU704	POWER CORD PLUG FOR 48382	31
AU684	WATER HOPPER FOR 48382	10	AU709	COMPRESSOR FOR 48382	21	AV815	PRICE TAG FOR 48382	32
AU685	LED FOR 48382	11	AU710	COMPRESSOR COVER FRONT FOR 48382	22			

Parts Breakdown

Model RE-CN-1000B 48383



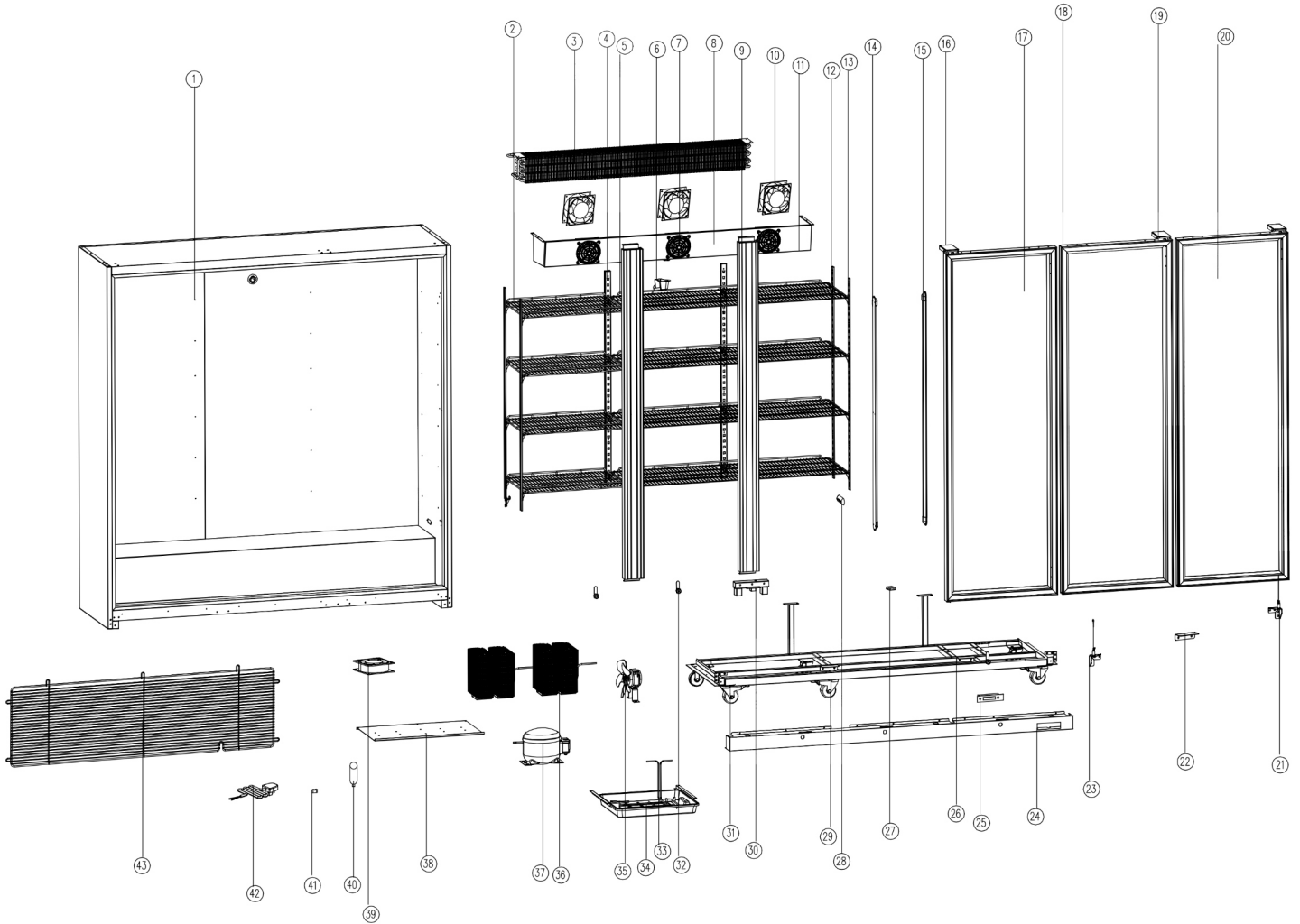
Parts Breakdown

Model RE-CN-1000B 48383

Item No.	Description	Position	Item No.	Description	Position	Item No.	Description	Position
AU713	CABINET FOR 48383	1	AU724	TOP LEFT HINGE FOR 48383	16	AU736	LOWER LEFT HINGE FOR 48383	31
AU682	SHELF CLAMP FOR 48383	2	AU686	TOP HINGE COVER FOR 48383	17	AU737	BASE FOR 48383	32
AU714	STEEL WIRE RACK FOR 48383	3	AU725	RIGHT DOOR FOR 48383	18	AU738	REAR COVER OF PRESS ROOM FOR 48383	33
AU715	FIN EVAPORATOR FOR 48383	4	AU726	LEFT DOOR FOR 48383	19	AU739	COMPRESSOR FOR 48383	34
AU684	WATER HOPPER FOR 48383	5	AU727	TOP RIGHT HINGE FOR 48383	20	AU740	FORCED EVAPORATION TUBE FOR 48383	35
AU681	EVAPORATOR FAN FOR 48383	6	AU728	LOCK FOR 48383	21	AU741	FAN FOR 48383	36
AU716	RACK HANGERS FOR 48383	7	AU729	SACRAMENTO FOR 48383	22	AU742	WATER CONNECTION BOX FOR 48383	37
AU717	EVAPORATOR WATER TRAY FOR 48383	8	AU691	THERMAL HEAD COVER FOR 48383	23	AU743	FLOOR FOR 48383	38
AU718	MIDDLE BEAM FOR 48383	9	AU730	LOWER RIGHT HINGE FOR 48383	24	AU744	CONDENSER FOR 48383	39
AU716	RACK HANGERS FOR 48383	10	AV817	ELECTRONIC THERMOSTAT FOR 48383	25	AU700	CONDENSER FAN FOR 48383	40
AU719	EVAPORATOR COVER FOR 48383	11	AU731	TRANSFORMER FOR 48383	26	AU745	FILTER FOR 48383	41
AU720	LED FOR 48383	12	AU732	WHEELS WITH BRAKES FOR 48383	27	AU699	LINE CLAMP FOR 48383	42
AU721	LED FOR 48383	13	AU733	FRONT COVER OF COMPRESSOR ROOM FOR 48383	28	AU746	POWER LINE FOR 48383	43
AU722	FAN COVER FOR 48383	14	AU734	CASTER WHEELS FOR 48383	29	AV818	PRICE TAG FOR 48383	44
AU723	FAN PLATE FOR 48383	15	AU735	SHELF LARGE CLIP FOR 48383	30			

Parts Breakdown

Model RE-CN-1200B 48384



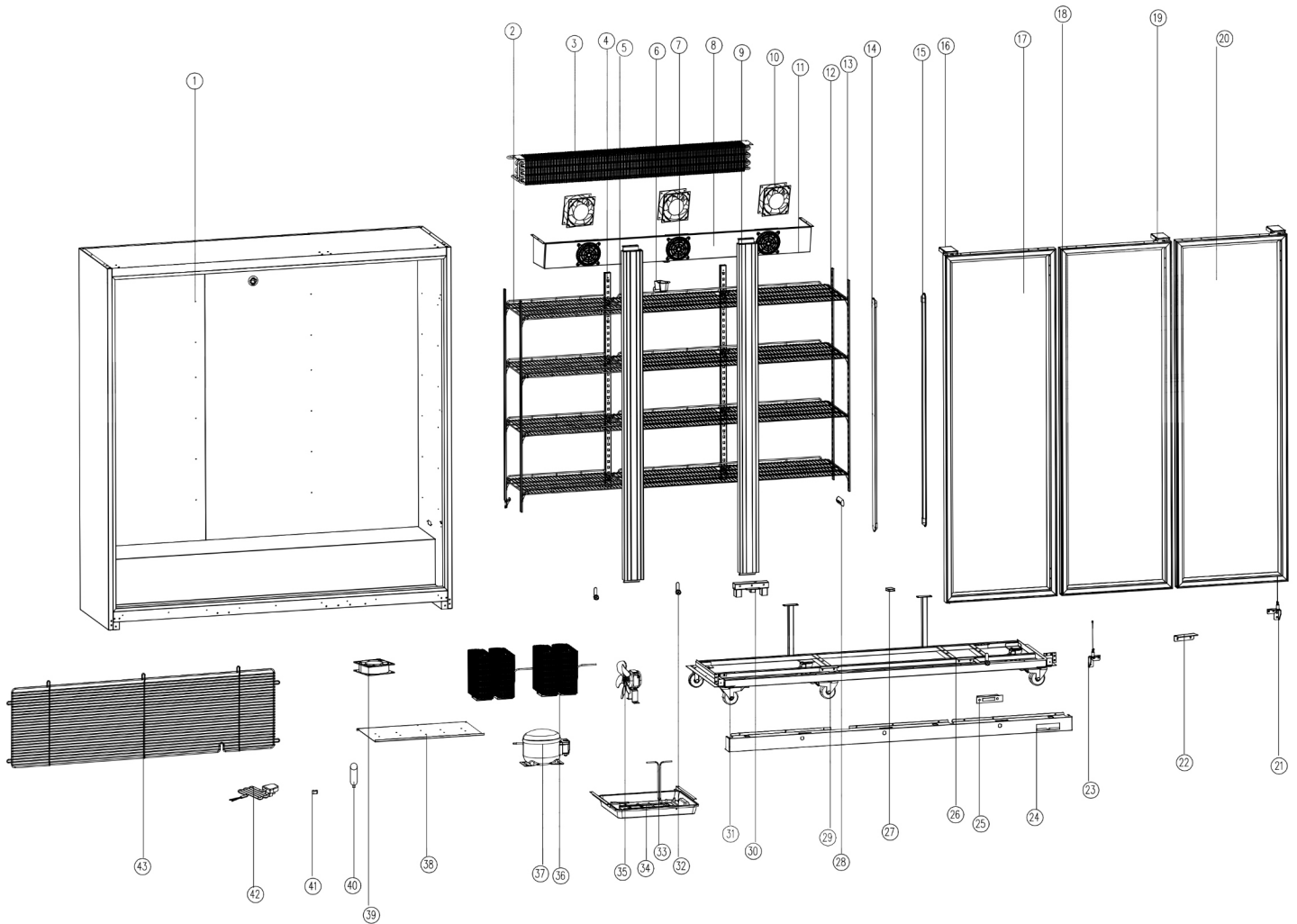
Parts Breakdown

Model RE-CN-1200B 48384

Item No.	Description	Position	Item No.	Description	Position	Item No.	Description	Position
AU747	CABINET FOR 48384	1	AU753	TOP LEFT HINGE FOR 48384	16	AU732	WHEELS WITH BRAKES FOR 48384	31
AU748	STEEL WIRE RACK FOR 48384	2	AU754	LEFT DOOR FOR 48384	17	AU763	LOCK FOR 48384	32
AU749	FIN EVAPORATOR FOR 48384	3	AU755	DOOR SEAL FOR 48384	18	AU764	FORCED EVAPORATION TUBE FOR 48384	33
AU716	RACK HANGERS FOR 48384	4	AU727	TOP RIGHT HINGE FOR 48384	19	AU765	WATER CONNECTION BOX FOR 48384	34
AU735	SHELF LARGE CLIP FOR 48384	5	AU756	RIGHT DOOR FOR 48384	20	AU700	CONDENSER FAN FOR 48384	35
AU684	WATER HOPPER FOR 48384	6	AU730	LOWER RIGHT HINGE FOR 48384	21	AU766	WIRE TUBE CONDENSER FOR 48384	36
AU722	FAN COVER FOR 48384	7	AU757	SACRAMENTO FOR 48384	22	AU767	COMPRESSOR FOR 48384	37
AU750	EVAPORATOR COVER FOR 48384	8	AU736	LOWER LEFT HINGE FOR 48384	23	AU768	FLOOR FOR 48384	38
AU751	MIDDLE BEAM FOR 48384	9	AU758	LOWER LEFT HINGE FOR 48384	24	AU741	FAN FOR 48384	39
AU681	EVAPORATOR FAN FOR 48384	10	AV820	ELECTRONIC THERMOSTAT FOR 48384	25	AU769	FILTER FOR 48384	40
AU752	EVAPORATOR WATER TRAY FOR 48384	11	AU760	BASE FOR 48384	26	AU699	LINE CLAMP FOR 48384	41
AU682	SHELF CLAMP FOR 48384	12	AU761	TRANSFORMER FOR 48384	27	AU770	POWER LINE FOR 48384	42
AU716	RACK HANGERS FOR 48384	13	AU691	THERMAL HEAD COVER FOR 48384	28	AU771	REAR COVER OF PRESS ROOM FOR 48384	43
AU720	LED FOR 48384	14	AU734	CASTER WHEELS FOR 48384	29	AV821	PRICE TAG FOR 48384	44
AU721	LED FOR 48384	15	AU762	MIDDLE DOOR LOWER HINGE FOR 48384	30			

Parts Breakdown

Model RE-CN-1500B 48385



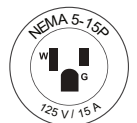
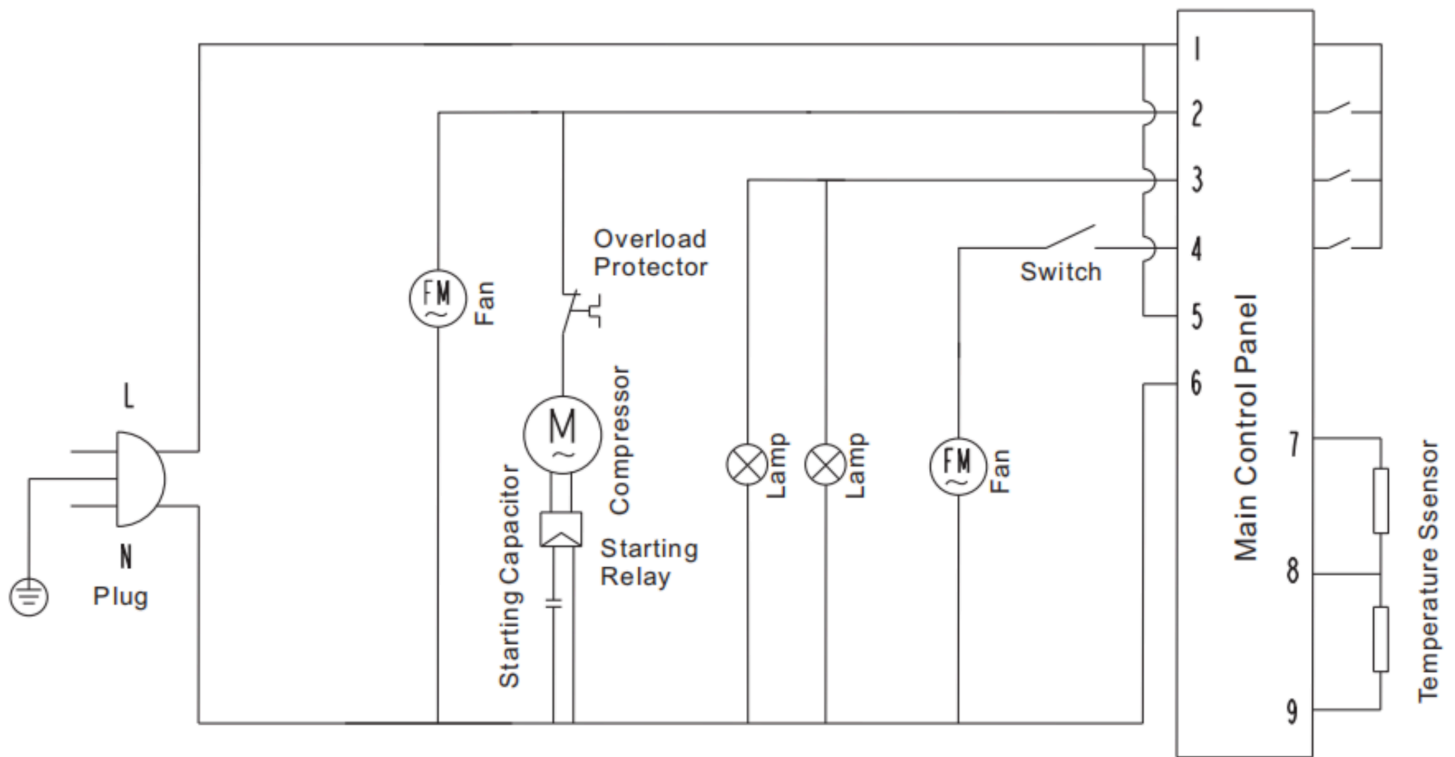
Parts Breakdown

Model RE-CN-1500B 48385

Item No.	Description	Position	Item No.	Description	Position	Item No.	Description	Position
AU772	CABINET FOR 48385	1	AU753	TOP LEFT HINGE FOR 48385	16	AU786	WHEELS WITH BRAKES FOR 48385	31
AU773	STEEL WIRE RACK FOR 48385	2	AU777	LEFT DOOR FOR 48385	17	AU787	LOCK FOR 48385	32
AU774	FIN EVAPORATOR FOR 48385	3	AU778	DOOR SEAL FOR 48385	18	AU788	FORCED EVAPORATION TUBE FOR 48385	33
AU716	RACK HANGERS FOR 48385	4	AU727	TOP RIGHT HINGE FOR 48385	19	AU765	WATER CONNECTION BOX FOR 48385	34
AU735	SHELF LARGE CLIP FOR 48385	5	AU779	RIGHT DOOR FOR 48385	20	AU700	CONDENSER FAN FOR 48385	35
AU684	WATER HOPPER FOR 48385	6	AU730	LOWER RIGHT HINGE FOR 48385	21	AU789	WIRE TUBE CONDENSER FOR 48385	36
AU722	FAN COVER FOR 48385	7	AU780	SACRAMENTO FOR 48385	22	AU790	COMPRESSOR FOR 48385	37
AU775	EVAPORATOR COVER FOR 48385	8	AU736	LOWER LEFT HINGE FOR 48385	23	AU791	FLOOR FOR 48385	38
AU751	MIDDLE BEAM FOR 48385	9	AU781	LOWER LEFT HINGE FOR 48385	24	AU741	FAN FOR 48385	39
AU681	EVAPORATOR FAN FOR 48385	10	AV825	ELECTRONIC THERMOSTAT FOR 48385	25	AU792	FILTER FOR 48385	40
AU776	EVAPORATOR WATER TRAY FOR 48385	11	AU783	BASE FOR 48385	26	AU699	LINE CLAMP FOR 48385	41
AU682	SHELF CLAMP FOR 48385	12	AU784	TRANSFORMER FOR 48385	27	AU793	POWER LINE FOR 48385	42
AU716	RACK HANGERS FOR 48385	13	AU691	THERMAL HEAD COVER FOR 48385	28	AU794	REAR COVER OF PRESS ROOM FOR 48385	43
AU720	LED FOR 48385	14	AU734	CASTER WHEELS FOR 48385	29	AV830	PRICE TAG FOR 48385	44
AU721	LED FOR 48385	15	AU785	MIDDLE DOOR LOWER HINGE FOR 48385	30			

Electrical Schematics

- Model RE-CN-0380B** 48381
- Model RE-CN-0450B** 48382
- Model RE-CN-1000B** 48383
- Model RE-CN-1200B** 48384
- Model RE-CN-1500B** 48385





Warranty Registration

Thank you for purchasing an Omcan product. To register your warranty for this product, complete the information below, tear off the card at the perforation and then send to the address specified below. You can also register online by visiting:

Merci d'avoir acheté un produit Omcan. Pour enregistrer votre garantie pour ce produit, complétez les informations ci-dessous, détachez la carte au niveau de la perforation, puis l'envoyer à l'adresse spécifiée ci-dessous. Vous pouvez également vous inscrire en ligne en visitant:

Gracias por comprar un producto Omcan usted. Para registrar su garantía para este producto, complete la información a continuación, cortar la tarjeta en la perforación y luego enviarlo a la dirección indicada a continuación. También puede registrarse en línea en:

<https://omcan.com/warranty-registration/>

For mailing in Canada

Pour postale au Canada

Por correo en Canadá

For mailing in the US

Pour diffusion aux États-Unis

Por correo en los EE.UU.

OMCAN

PRODUCT WARRANTY REGISTRATION

3115 Pepper Mill Court,
Mississauga, Ontario
Canada, L5L 4X5

OMCAN

PRODUCT WARRANTY REGISTRATION

4450 Witmer Industrial Estates, Unit 4,
Niagara Falls, New York
USA, 14305

or email to: service@omcan.com



Purchaser's Information

Name: _____

Address: _____

City: _____ Province or State: _____ Postal or Zip: _____

Country: _____

Dealer from which Purchased: _____

Dealer City: _____ Dealer Province or State: _____

Invoice: _____

Model Name: _____ Model Number: _____

Machine Description: _____

Date of Purchase (MM/DD/YYYY): _____

Would you like to extend the warranty? Yes No

Company Name: _____

Telephone: _____

Email Address: _____

Type of Company:

Restaurant Bakery Deli

Butcher Supermarket Caterer

Institution (*specify*): _____

Other (*specify*): _____

Serial Number: _____

Date of Installation (MM/DD/YYYY): _____

Thank you for choosing Omcan | Merci d'avoir choisi Omcan | Gracias por elegir Omcan



Since 1951 Omcan has grown to become a leading distributor of equipment and supplies to the North American food service industry. Our success over these many years can be attributed to our commitment to strengthen and develop new and existing relationships with our valued customers and manufacturers. Today with partners in North America, Europe, Asia and South America, we continually work to improve and grow the company. We strive to offer customers exceptional value through our qualified local sales and service representatives who provide convenient access to over 6,500 globally sourced products.

Depuis 1951 Omcan a grandi pour devenir un des "leaders" de la distribution des équipements et matériel pour l'industrie des services alimentaires en Amérique du Nord. Notre succès au cours de ces nombreuses années peut être attribué à notre engagement à renforcer et à développer de nouvelles et existantes relations avec nos clients et les fabricants de valeur. Aujourd'hui avec des partenaires en Amérique du Nord, Europe, Asie et Amérique du Sud, nous travaillons continuellement à améliorer et développer l'entreprise. Nous nous efforçons d'offrir à nos clients une valeur exceptionnelle grâce à nos ventes locales qualifiées et des représentants de service qui offrent un accès facile à plus de 6500 produits provenant du monde entier.

Desde 1951 Omcan ha crecido hasta convertirse en un líder en la distribución de equipos y suministros de alimentos en América del Norte industria de servicios. Nuestro éxito en estos años se puede atribuir a nuestro compromiso de fortalecer y desarrollar nuevas relaciones existentes con nuestros valiosos clientes y fabricantes. Hoy con socios de América del Norte, Europa, Asia y América del Sur, que trabajan continuamente para mejorar y crecer la empresa. Nos esforzamos por ofrecer a nuestros clientes valor excepcional a través de nuestro local de ventas y representantes de los servicios que proporcionan un fácil acceso a más de 6,500 productos con origen a nivel mundial.

